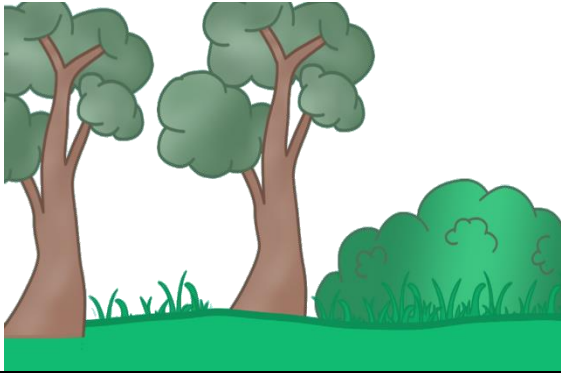


Amoeba Sisters | Video Recap

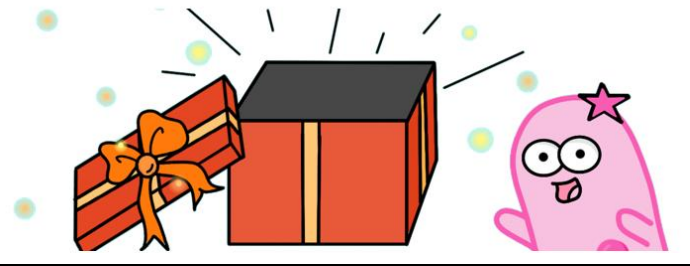
NAME: _____

Amoeba Sisters Video Recap: *Ecological Succession*

1. If you had to define **ecological succession** in your own words in a 140 character text, how would you define it?



2. How is **primary succession** different from **secondary succession**? Give an example of an event that may lead to primary succession.



3. How can **moss** and **lichen**, which may grow in the beginning of primary succession, potentially make it easier for other organisms to grow and live in the same area later on?



4. What is meant by a **pioneer species**? Would you expect a shrub or dandelion (dispersed by wind-blown seeds) to be a more likely pioneer plant species? Why?



